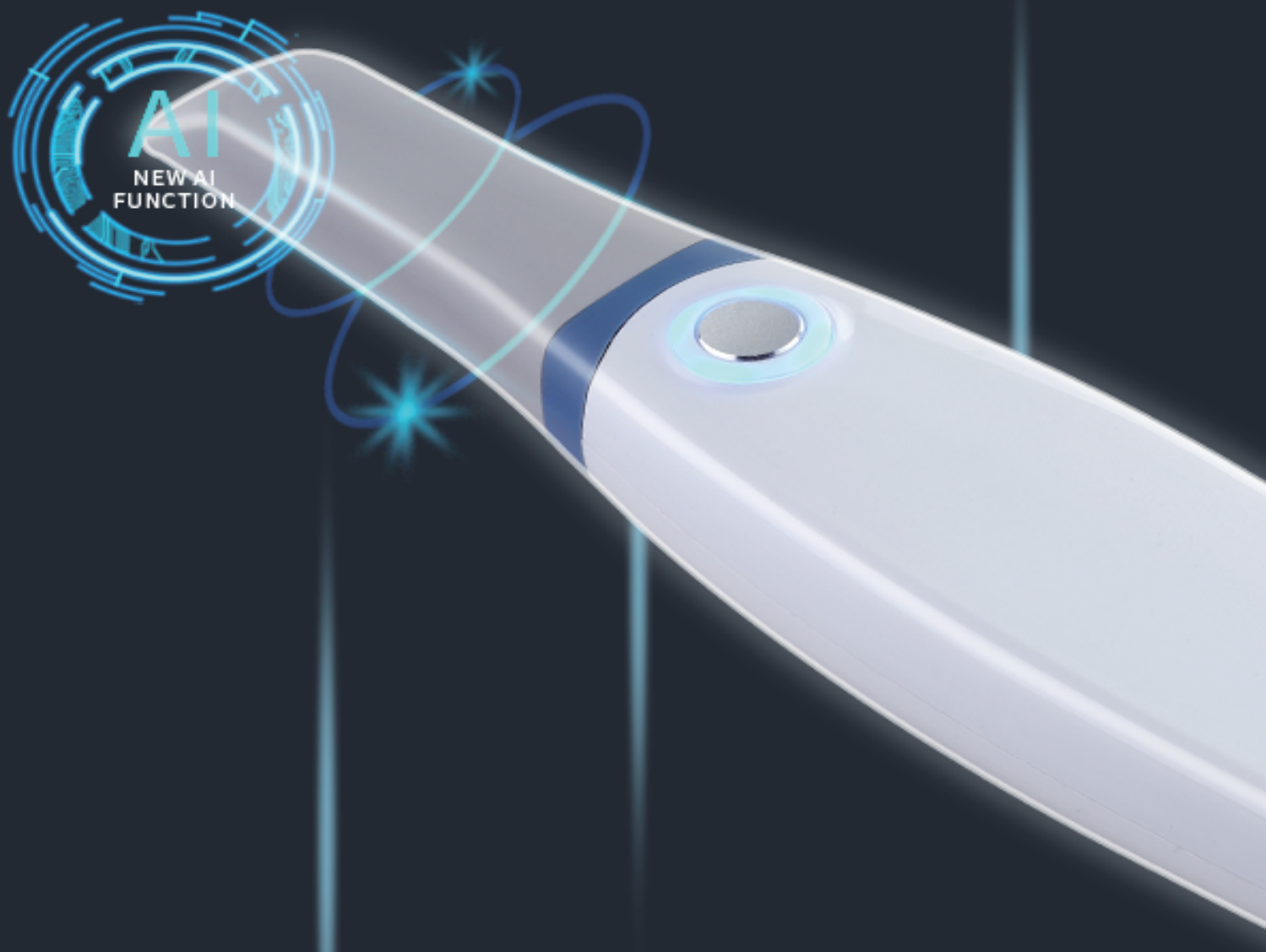




XANGTECH

3LD 2.0



*Preferred your Clinic!*



XANGTECH



**➔ Now Immediately**

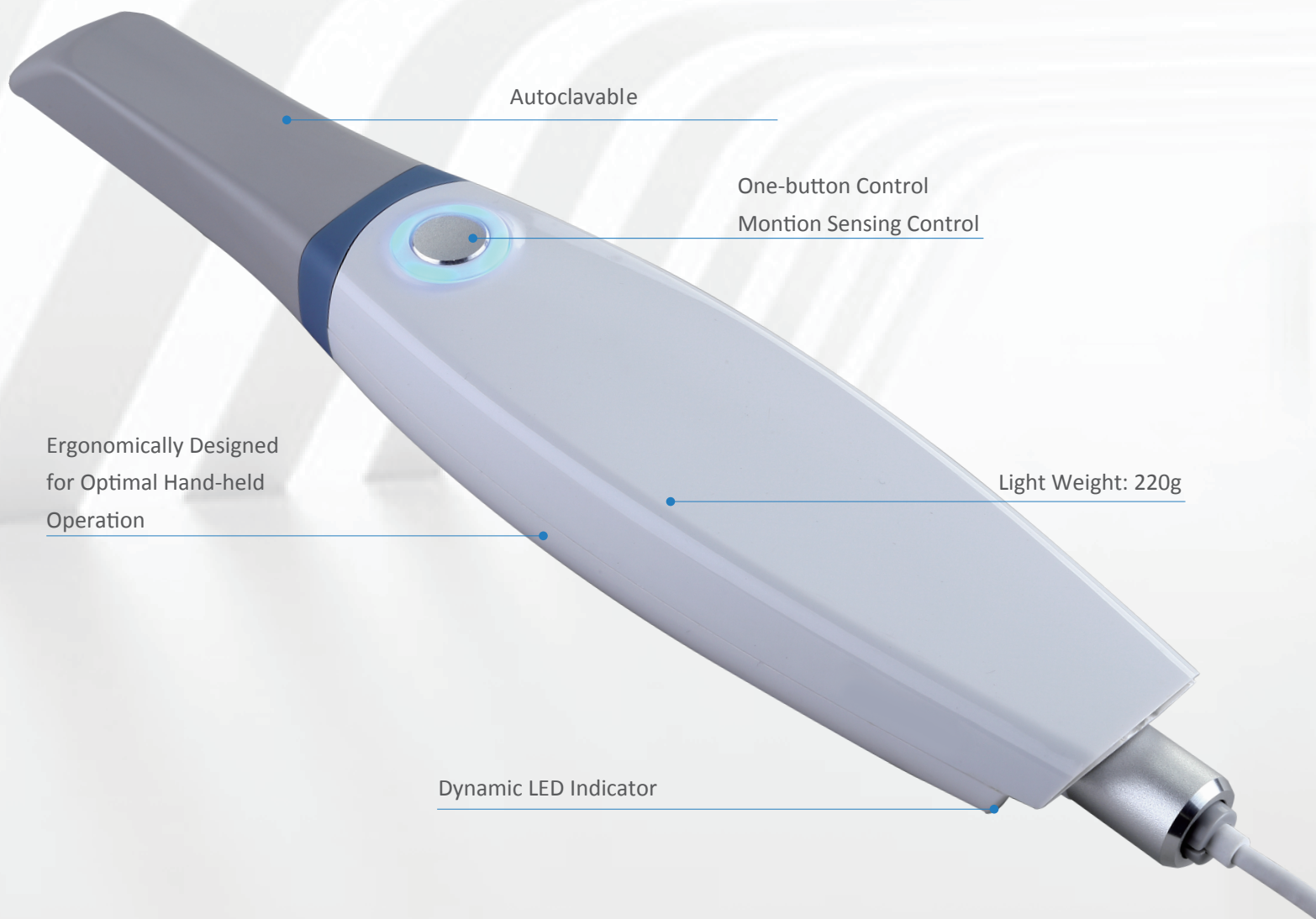
starting with -XANGTECH 3LD 2.0 generation

# Meet XANGTECH 3LD 2.0

## A Highly Efficient Digital Chairside Solution

Say hello to XANGTECH 3D's brand new intraoral scanner, 3LD 2.0! Smart, exceptional and elegant, 3LD 2.0 improves the overall clinical experience. It allows users to easily acquire vivid digital impressions in a faster and more accurate way.

Moreover, 3LD 2.0 comes with a wide range of different intelligent functions, guaranteeing more comfortable chairside experience and efficient clinic-lab collaboration



Autoclavable

One-button Control  
Motion Sensing Control

Ergonomically Designed  
for Optimal Hand-held  
Operation

Light Weight: 220g

Dynamic LED Indicator

# Capture Digital Impressions in Real Time

Fast, Accurate and Exceptional Scan Performance for Chairside Experience

Full arch  
**90<sub>s</sub>**

## Faster Scan

The scan speed is 30% faster than the old generation.

**30%↑**

## More Accurate Scan

Thanks to optimized algorithms and imaging mechanism, 3LD 2.0 carries out more accurate and precise results by 30%, meeting the clinical needs of different applications.

**15%**

## Longer Scan Tip

Slimmer and 15% longer autoclavable scanner tips offer patients with more comfortable clinical experience.

up to  
**20<sub>mm</sub>**

## Greater Scan Depth

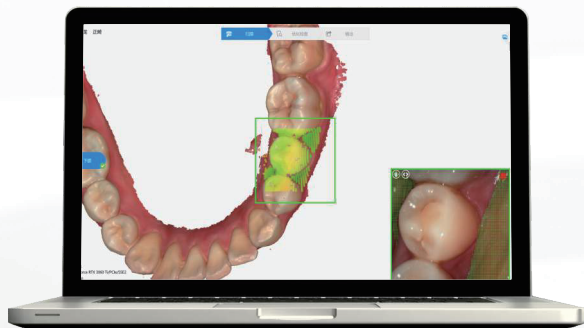
3LD 2.0 is suitable for various clinical scenarios including acquiring scan bodies and periodontal scans.

# User-Friendly

## Smart and Intuitive - Smooth Scanning Experience for Dentists

With powerful and intelligent data processing capabilities, 3LD 2.0 is easy to maneuver.

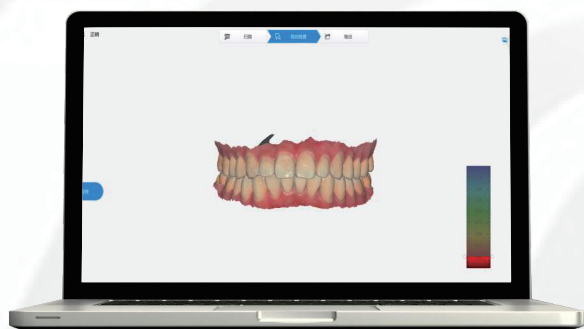
Even beginners can get ideal scan results in minutes.



AI Scan

### New AI Scanning Function

New AI function will remove extra softer tissues in real time, ensuring the smoother scanning operation and cleaner scanned results. It can be applied to edentulous jaw optimization, caries detection and automatic labeling, etc.

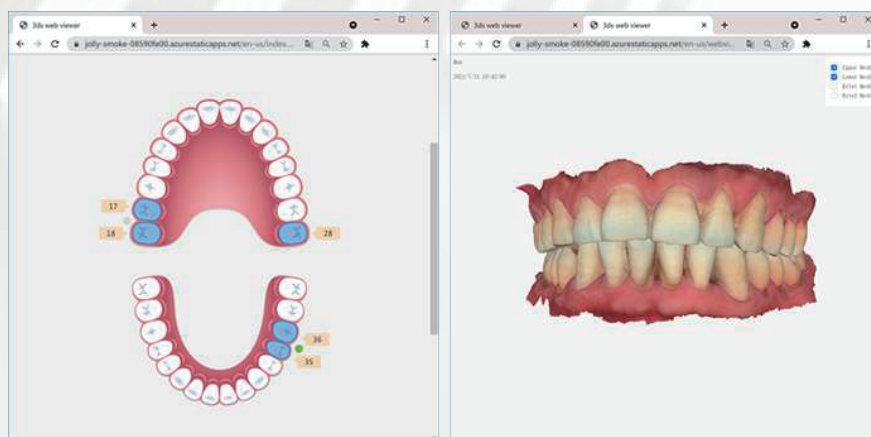


### 3D Real Color

The surface texture and contrast of the scanned model are stronger; the color distinction between teeth and soft tissues in the data is more obvious; the edges are clearer, which is helpful for doctors and technicians to do further processing.

### Cloud Share

The scanned data can be shared with a QR code or link directly, realizing doctor-patient compatibility, communication costs reduction and high-efficiency digital diagnosis and treatment



### Complete Online Support System

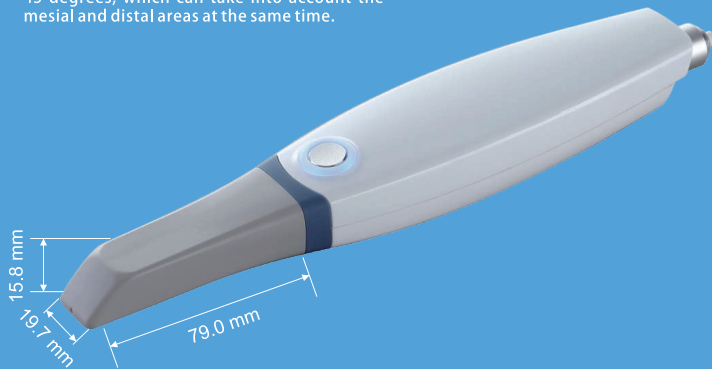
Online support system, including 12 columns, nearly 100 articles, covering all aspects from basic scanning to software functions introduction, with pictures and texts, intuitive and easy to learn.

# XANGTECH 3LD 2.0 Intraoral Scanner

## Technical Specifications

### Scanner Tip:

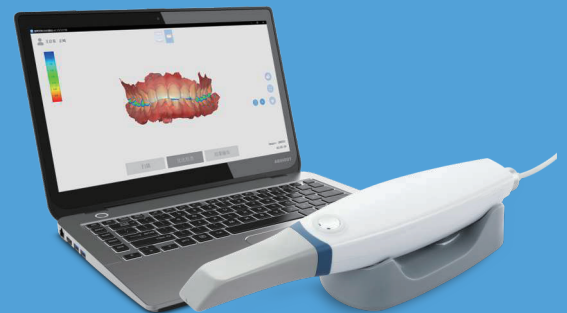
The mirror angle of the scanning tip is close to 45 degrees, which can take into account the mesial and distal areas at the same time.



Handpiece Size	240x49.5x30.5mm
Imaging Technology	Optical Continuous Video Capture
Scanning Distance	20mm
Accuracy	20um
Imaging Sync	3D
Quick Reset	Yes
Data Refine	Yes
Export Format	STL,PLY,OBJ
Handpiece Weight	210g
Service Life	>30000h

### Basic Computer Configuration Required(Recommended):

- Microsoft Windows 10 64bit Pro edition or above
- Processor: Intel Core i7-9700H, 16GB or above;
- Graphics Card: NVIDIA GeForce 1660, 6GB or above;  
Note: AMD Graphics may not support all software functions, which is not suggested.
- SSD: 256GB or 128GB + 1TB mechanical disk or above;
- Port: USB 2.0/3.0
- Display Resolution: 1920x1080



Laptop Type

### Device Operation Environment:

- a) Temperature: 10°C-40°C
- b) Relative Temperature: ≤85%
- c) Atmospheric Pressure: 86KPa-106KPa

### Power Supply:

- a) Voltage: 100~240V, 50/60Hz
- b) Power: 25 VA

### Device Storage Environment:

- a) Temperature:-20°C-55°C
- b) Relative Temperature:10%-93%
- c) Atmospheric Pressure: 86KPa-106KPa



Monitor Cart Type



# New Upgrade 3LD 2.0

Digital Implant / Orthodontics / Restorati  
Make it easier for dental treatme



Fast



New AI



Small



Simply  
Operation



Personalized  
Design



Scan  
Freely